



Hard Chess Puzzle # 0129

By

G Bud Games
<https://gbud.in>

February 6, 2022

Contents

Hard Chess puzzle # 0129 - Mate in 3 moves	3
Hard chess puzzle 0129	3
Solution to hard chess puzzle 0129	4
Solution 1	4
Right moves for the solution to the hard chess puzzle 0129	8
Explanation for the moves	8
Categories of hard chess puzzle 0129	8
hard chess puzzle 0129 chart	9
How to view the solution to hard chess puzzle 0129	11
How to get help for moves in the hard chess puzzle 0129	12
Play chess for free	13

List of Figures

1	Solve this hard chess puzzle 0129. Mate in 3 moves @ https://gbud.in/gj93233	3
2	Solve this hard chess puzzle online with solution @ https://gbud.in/gj93233	3
3	Initial board position of hard chess puzzle 0129	4
4	c5	5
5	Bxh2+	5
6	Kxh2	6
7	Rh8+	6
8	Kg1	7
9	Qxd1#	7
10	hard chess puzzle 129 chart 1	9
11	hard chess puzzle 129 chart 2	10
12	hard chess puzzle 129 chart 3	10
13	hard chess puzzle 129 chart 4	11
14	Click the solution button to view solutions @ https://gbud.in/gj93233	11
15	Click the help button to get help on next move @ https://gbud.in/gj93233	12
16	Solve more hard puzzles @ https://gbud.in/chshdpz	12
17	Solve other puzzles @ https://gbud.in/chsgppz	12
18	Play chess online for free. Solve puzzles and play with friends	13
19	Solve this puzzle online by scanning this QR code or go to the link below	14

Hard Chess puzzle # 0129 - Mate in 3 moves

Solve this hard chess puzzle and improve your chess games through improvement of your chess strategies and chess tactics. This hard puzzle is a subset of [kids games](#).

Puzzle No : 0129

Difficulty level : hard

Description : Mate in 3 moves

Next Move : Black

Player level : Advanced

Short URL for puzzle : <https://gbud.in/gj93233>

Hard chess puzzle 0129

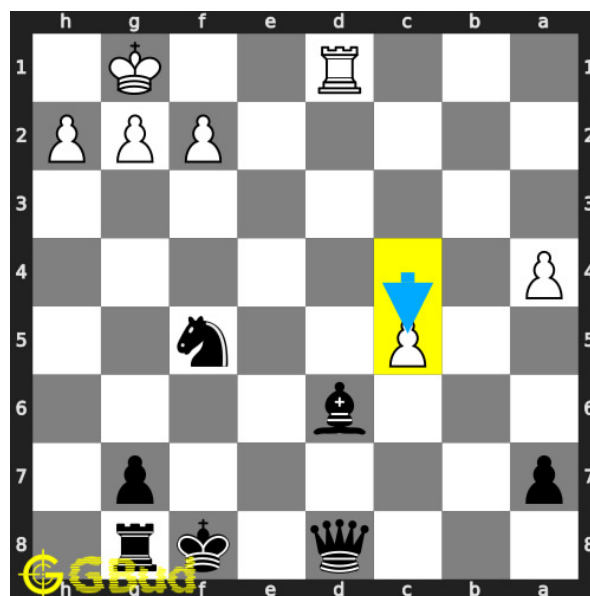


Figure 1: Solve this hard chess puzzle 0129. Mate in 3 moves @ <https://gbud.in/gj93233>



Figure 2: Solve this hard chess puzzle online with solution @ <https://gbud.in/gj93233>

Dont forget to check out [chess puzzles](#), [easy chess puzzles](#), [medium chess puzzles](#), [hard chess puzzles](#) and [chess puzzles collections](#) .

Solution to hard chess puzzle 0129

At this puzzle, next [move](#) is by [Black](#). The objective of the puzzle is to mate in 3 moves.

See the interactive solution at the [puzzle page](#)

Solution 1

Initial board position This is the initial board position of hard chess puzzle 0129.

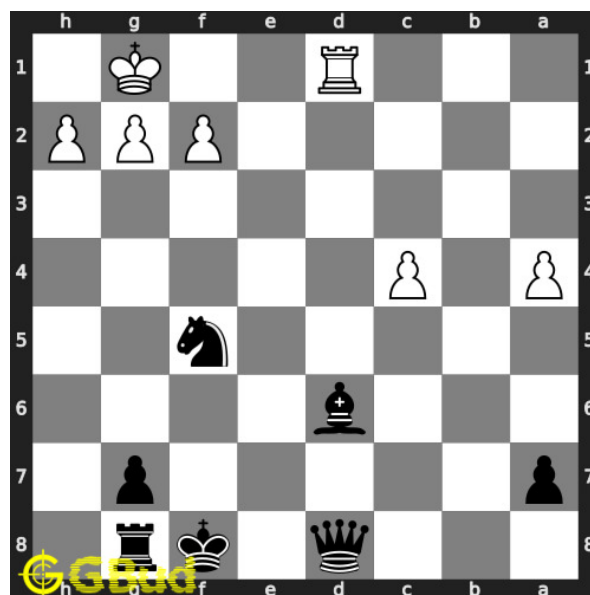


Figure 3: Initial board position of hard chess puzzle 0129

Move 1 Move by white

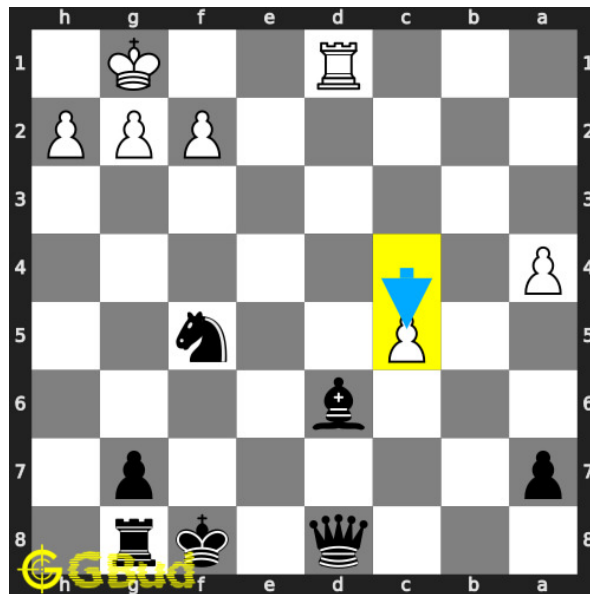


Figure 4: c5

opponent's **pawn** threatens your **bishop**. this is a decoy **move** since the movement of your **bishop** will make you lose the **queen** to the **rook**.

Move 2 Move by black

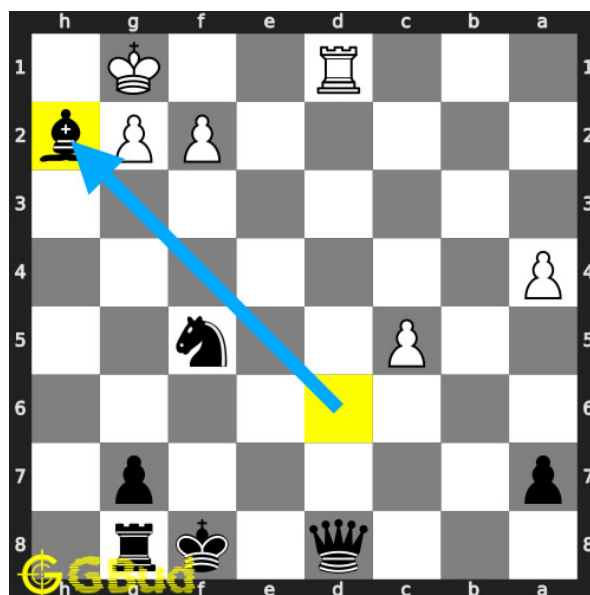


Figure 5: Bxh2+

your **bishop sacrifices** itself to open the h **file** and d **file**.

Move 3 Move by white

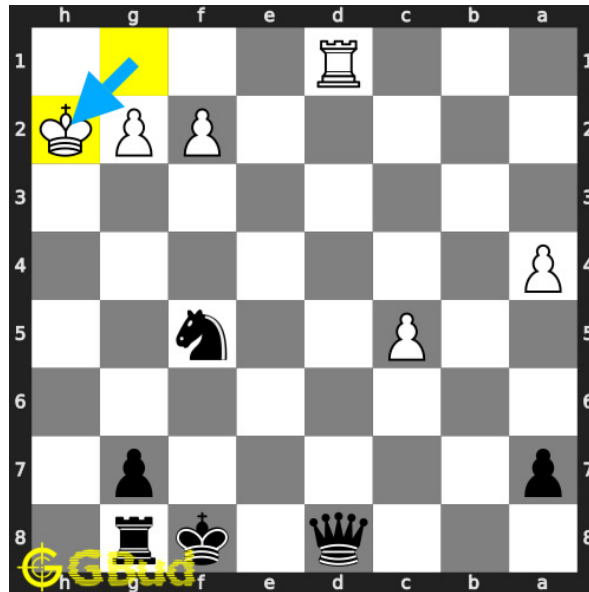


Figure 6: Kxh2

opponent's **king** captures your **bishop**. this is a zugzwang move as the opponent's **king** is forced to respond. they can not capture your **queen** using the **rook** since the **king** was in **check**.

Move 4 Move by black

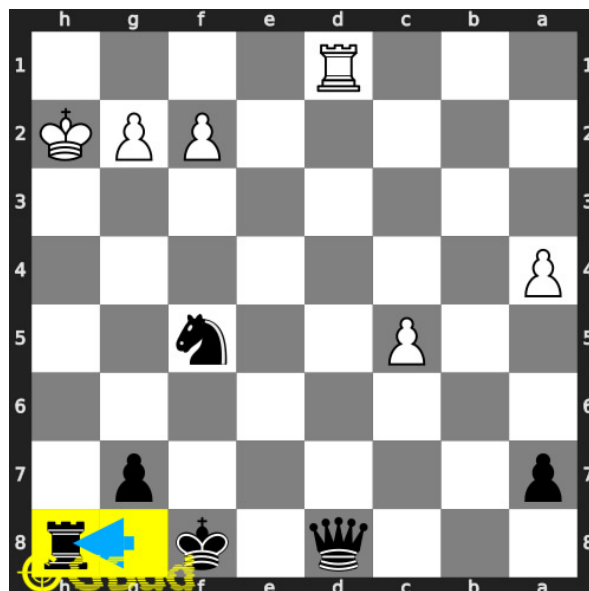


Figure 7: Rh8+

your **rook** moves to **h8** and gives **check**. this will force the opponent's **king** to move to first **rank**.

Move 5 Move by white

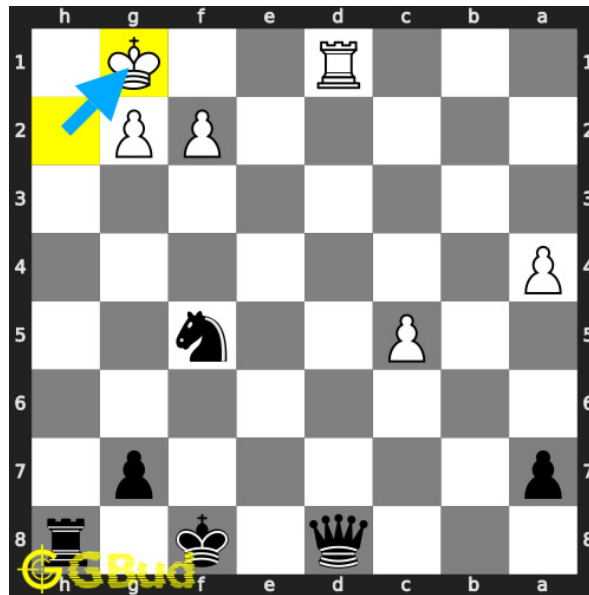


Figure 8: Kg1

opponent's king move to g1 as this is the only free square available.

Move 6 Move by black

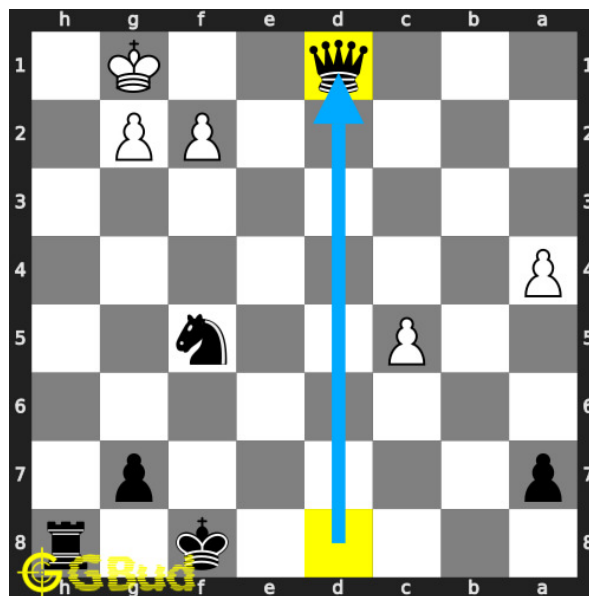


Figure 9: Qxd1#

your queen captures opponent's hanging rook and checkmate. opponent's king can not escape since it is blocked by friendly pawns. this is how you can mate in 3 moves.

Right moves for the solution to the hard chess puzzle 0129

Based on the objective of the puzzle, you have to make the right moves. Following are the right moves

1. Bxh2+, Rh8+, Qxd1#

Explanation for the moves

1. c5 - Opponent's pawn threatens your bishop. This is a decoy move since the movement of your bishop will make you lose the queen to the rook.
2. Bxh2+ - Your bishop sacrifices itself to open the h file and d file.
3. Kxh2 - Opponent's king captures your bishop. This is a zugzwang move as the opponent's king is forced to respond. They can not capture your queen using the rook since the king was in check.
4. Rh8+ - Your rook moves to h8 and gives check. This will force the opponent's king to move to first rank.
5. Kg1 - Opponent's king move to g1 as this is the only free square available.
6. Qxd1# - Your queen captures opponent's hanging rook and checkmate. Opponent's king can not escape since it is blocked by friendly pawns. This is how you can mate in 3 moves.
7. For right move - You did not mind sacrificing your bishop for a checkmate. It was a good strategy
8. For wrong move - You have missed the chance to checkmate. Try again with the sacrifice of the bishop.

Categories of hard chess puzzle 0129

This hard chess puzzle falls in these categories.

1. [Hard chess puzzles](#)
2. [Sacrifice puzzles in chess](#)
3. [Mate in 3 puzzles in chess](#)
4. [Endgame puzzles in chess](#)
5. [Strategy puzzles in chess](#)
6. [Zugzwang puzzles in chess](#)
7. [Rook puzzles in chess](#)
8. [Queen puzzles in chess](#)
9. [Bishop puzzles in chess](#)

hard chess puzzle 0129 chart



Figure 10: hard chess puzzle 129 chart 1



Figure 11: hard chess puzzle 129 chart 2



Figure 12: hard chess puzzle 129 chart 3

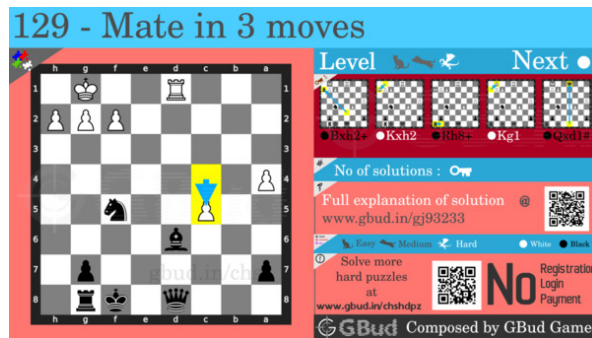


Figure 13: hard chess puzzle 129 chart 4

How to view the solution to hard chess puzzle 0129

To view the [solution to this puzzle](#), follow the steps given below

1. Go to the [puzzle page](#)
2. Click the solution button (Key as shown [below](#)) to view the solution



Figure 14: Click the solution button to view solutions @ <https://gbud.in/gj93233>

How to get help for moves in the hard chess puzzle 0129

To get help or the possible next moves in the puzzle, , follow the steps given below

1. Go to the [puzzle page](#)
2. Click the help button (exclamation mark as shown [below](#)) to get help or suggestion on next possible [move](#)



Figure 15: Click the help button to get help on next move @ <https://gbud.in/gj93233>



Figure 16: Solve more hard puzzles @ <https://gbud.in/chshdpz>



Figure 17: Solve other puzzles @ <https://gbud.in/chsgppz>

Play chess for free

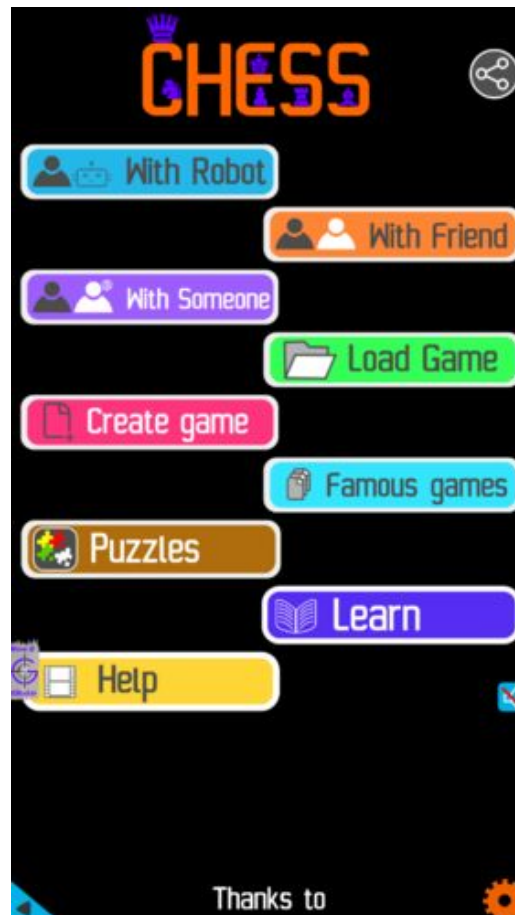


Figure 18: Play chess online for free. Solve puzzles and play with friends

Play chess for free at <https://gbud.in/chs>

We present you a platform to play chess online with friends for free. No need to install any app. You can play chess for free without registration or login.

Simple. You can do several chess related activities.

1. solve chess puzzles
2. learn about chess
3. play chess with computer
4. play chess with friend
5. create your own chess games

6. [fen viewer](#)
7. [fen editor](#)
8. [fen generator](#)
9. [pgn viewer](#)
10. [chess board editor](#)
11. [view famous chess games.](#)



Figure 19: Solve this puzzle online by scanning this QR code or go to the link below

<https://gbud.in/gj93233>

Read the latest article on Hard Chess puzzle # 0129 - Mate in 3 moves by scanning this QR code or click the link

Previous article : « [Hard Chess puzzle # 0128 - Gain opponent's rook](#)

Next article : [Hard chess puzzles](#) »

[Back to top](#)

[Contact Us](#)